

Effects of silymarin as adjuvant drug on serum levels of CTRP3, anti-cyclic citrullinated peptide (CCP), and high-sensitivity C-reactive protein (hs-CRP) in rheumatoid arthritis patients

Mohammad Ehsan Elahi¹, Daniel Elieh-Ali-Komi^{2,3}, Farjam Goudarzi⁴, Ehsan Mohammadi-Noori⁵, Shirin Assar⁶, Mehrdad Shavandi¹, Amir Kiani^{4,5,*}
Homayoin Elahi⁶

- 1) Student Research Committee, Kermanshah University of Medical Sciences, Kermanshah, Iran
- 2) Institute of Allergology, Charité-Universitätsmedizin Berlin, Corporate Member of Freie Universität Berlin and Humboldt-Universität zu Berlin, Berlin, Germany
- 3) Fraunhofer Institute for Translational Medicine and Pharmacology ITMP, Immunology and Allergology, Berlin, Germany
- 4) Regenerative Medicine Research Center (RMRC), Kermanshah University of Medical Sciences, Iran Medical Sciences
- 5) Pharmaceutical Sciences Research Center, Health Institute, Kermanshah University of Kermanshah, Iran
- 6) Department of Internal Medicine, Imam Reza Hospital, Kermanshah University of Medical Sciences, Kermanshah, Iran

ABSTRACT

Silymarin is known for its anti-inflammatory and antioxidant properties. We investigated these effects on serum levels of CTRP3, Anti-CCP, and hs-CRP in individuals with Rheumatoid arthritis (RA). In this study, 42 individuals with RA were recruited and their serum specimens were collected, serum levels of hs-CRP, AntiCCP antibodies, and CTRP3 were measured using ELISA. DNA was extracted and investigated for the existence of possible new mutations in the gene encoding CTRP3 using the PCR technique; the desired fragments were then amplified and sequenced. Another blood sample was collected from the case group after taking *livergol* for three months (3 doses of 140 mg/day) and the tests were repeated. Anti-CCP Abs levels in the postintervention responding group decreased compared to preintervention ($p < 0.001$) while in the non-responding group, the levels increased after the intervention compared to the levels before the intervention ($p = 0.019$). Additionally, CTRP3 levels in the responding group increased postintervention ($p = 0.003$), however, in the non-responding group the levels decreased postintervention when compared to preintervention ($p = 0.02$). The responding group had significantly lower levels of hs-CRP when compared to that of preintervention ($p = 0.005$) whereas the non-responding group had significantly higher levels of postintervention ($p < 0.001$). Moreover, the results of sequencings of exon 6 on *CTRP3* gene showed the presence of mutations in exon 6 (position 215:C>T, 338:G>A, 359:A>C, and 153:T>C). Silymarin could be used as an adjuvant in the treatment of rheumatoid arthritis.

Keywords: CTRP3; hs-CRP; Anti-CCP; Rheumatoid Arthritis; Silymarin

*Corresponding Author: Professor of Toxicology, Regenerative Medicine Research Center (RMRC), Kermanshah University of Medical Sciences, Kermanshah, Iran; Tel: +98 9188316929; Fax: +98 8334276493
E.mail: akiani@kums.ac.ir

INTRODUCTION

Rheumatoid arthritis (RA) is a chronic systemic autoimmune pathology [1]. Both innate and specific immune systems are involved in the development of the disease [2, 3]. The main symptoms include joint pain and stiffness with progressive destruction that causes disability [4]. The interplay of environmental and genetic factors that contribute to the development of RA results in a complex disease [4]. C-reactive protein (CRP) is an acute-phase protein of hepatic origin that increases in the blood following inflammation and infection [5, 6].

The test gained significance during the COVID-19 pandemic as CRP levels were notably higher in critical patients and were associated with the prognosis [7, 8]. High-sensitivity C-reactive Protein (Hs-CRP) test measures low CRP levels up to 0.3 mg/L [9]. Anti-Citrullinated Protein (Anti-CCP) also known as anticyclic citrulline peptide is an antibody predominantly from the IgG, IgM, and IgA classes, that acts as a powerful biomarker for diagnosis of RA in the early stages [10]. In General, the presence of these Abs is associated with poorer outcomes, including boosted disease activity, radiographic progression, and disability [11]. Recently, the role of a member of the TNF-dependent protein family called C1q/TNF-related protein 3 (CTRP3), which shares a structure with adiponectin (a regulator of thermogenesis which is produced by adipocytes [12]) that is expressed and secreted in adipose tissue and monocytes, has been identified in metabolism and inflammation [13, 14]. CTRP3 is a potent anti-inflammatory adipokine that inhibits inflammatory pathways induced by fatty acids, lipopolysaccharides, and TLR ligands in adipose tissue and monocytes [12, 15]. This protein has a depressant effect on TNF and IL-6 levels [16]. Several studies have evaluated serum CTRP3 levels in patients with diabetes mellitus (DM), obesity, hypertension, and coronary artery disease. Most of these studies have reported low levels of CTRP3 in patients with heart and metabolic disease [17, 18]. In humans, the *CTRP3* gene is located on chromosome 5 (5p13.2) and has 13 exons (<https://www.ncbi.nlm.nih.gov/gene/114899>) [19]. Silymarin is a flavonoid compound extracted from Milk thistle (*Silybum marianum*) [20]. In various studies, the strong anti-inflammatory and antioxidant effects of silymarin have been reported [21, 22]. Since the circulating level of CTRP3 in patients with RA has yet not been evaluated, this study's main purpose was to investigate the effect of silymarin on the serum level of CTRP3 and to find possible new mutations in the *CTRP3* gene to be considered in prospective genotyping studies.

MATERIALS AND METHODS

Patients recruiting: In this study, 57 volunteer patients diagnosed with RA who had a disease history of a minimum of two years were examined by a rheumatologist after obtaining permission from the University Ethics Committee (ethics code: 23322) and were included in the study according to the criteria of the American Rheumatology Association (ACR), EULAR.

The enrolled patients were stable RA patients under treatment of a standard drug regimen of low-dose prednisolone, hydroxychloroquine or sulfasalazine, and methotrexate. Patients with severe RA and new cases of the disease were excluded from the study, as it was possible that rheumatologists would need to change the medications or dosages during the study based on the patient's condition. Of the participants, three were excluded from the study due to dizziness, four due to stomach pain, two due to exacerbation of joint pain, and one due to bloating while discontinuing livergol. Additionally, five were excluded due to not taking the drug or irregular use of the drug from the study, and finally, 42 patients were included in the study until the end of the treatment period of which 14.3% were male, and 85.7% were female. The mean age of enrolled individuals was 47.59 ± 12.46 , and they were between the ages of 16 and 70 years old. At the beginning of the study, 10 mL of fasting blood specimen was collected of which 3 mL, was poured into an EDTA-containing tube and was used to extract DNA using the phenol-chloroform method and stored at -70°C [23, 24]. The rest of the collected blood was used to

separate the serum for further analysis. The recruited patients took 140 mg livergol tablet (Goldaru-Iran) three times daily for three months, and then a blood sample was taken and retested.

Measurement of biochemical analytes and antibody assay: Serum hs-CRP levels were measured using a Monobind Inc ELISA kit (CA 92630, USA). Moreover, Serum CTRP3 levels were measured using a sandwich ELISA kit (DY7925-05, USAR & D System). We measured serum Anti-CCP levels using the competitive MyBioSource ELISA kit (Cat N: MBS7235871, USA) according to the manufacturer's instructions. All ELISA tests we performed in triplicate.

DNA extraction and genotyping: The genomic DNA was isolated from blood leukocytes using the phenol-chloroform method (TaiwanVIOGENE) [24, 25]. The majority of the detected mRNA (approximately 76%) was linked to exon 6 of the *C1QTNF3* (*CTRP3*) gene, as shown in the NCBI Nucleotide report (https://www.ncbi.nlm.nih.gov/nucore/NM_181435.6?report=graph). Additionally, crucial regulatory regions, including the PolyA, are located within exon 6. Therefore, exon 6 was selected as the primary target for sequencing. In contrast, the other exons of the *C1QTNF3* gene were relatively short in length, which made it challenging to effectively amplify and sequence using PCR. As a result, the focus was placed on thoroughly analyzing exon 6, which contained the most abundant mRNA transcripts and important regulatory elements.

PCR technique was used to amplify exon 6 of the gene encoding *CTRP3*. Two pairs of primers were designed based on the sequence in GeneBank and using the primer3 online Website (<https://primer3.ut.ee/>) to amplify 715bp and 855bp components (Table 1). To serve as controls, we utilized DNA samples from local healthy individuals without any history or symptoms of rheumatologic conditions. The PCR reaction was performed using a 25 uL volume of PCR reaction mixture. The PCR process was performed in 35 cycles using the temperature cycle. The product of PCR was electrophoresed on 2% agarose gel[23]. After the amplification of the desired fragments, the PCR product was sequenced using the Sanger method to identify possible new mutations in exon 6 of the *CTRP3* gene. Sequencing was performed using ABI 3730 capillary sequencer (Life Technologies, Carlsbad, CA) and the results were analyzed using SnapGene 5.0.8 software.

Table 1: Primer sequence, length of the piece, and PCR condition considered for amplification of *CTRP3* gene 715 and 855 bp components.

Gene	Primer sequence	Product size	Temperature program
<i>CTRP3</i>	Forward: 5`GGTCAGGAGGTTGAGGTTCA3` Reverse: 5`TTTTAGCATCTCAGTTTTGGGACAC3`	715 bp	95°C, 5 min; 95°C, 30 sec; 59°C, 30 sec; 72°C, 40 sec; 72°C, 10 min; 35 cycles
<i>CTRP3</i>	Forward:5`GTGTCCCAAAACTGAGATGCTAAAA3` Reverse: 5`CTTAGCCCTTTGCCTTCTATG3`	855 bp	95°C, 5 min; 95°C, 30 sec; 59°C, 30 sec; 72°C, 40 sec; 72°C, 10 min; 35 cycles

Note: Primer Forward (10pmol): 1 µL, Primer Reverse(10pmol): 1 µL, MgCl₂(50Mm): 1 µL, PCR Buffer10X:2.5, dNTPs (200 µM): 0.5µL, ddH₂O: 19.05 µL, Taq DNA Polymerase (5 U/µL):0.2 µL, DNA: 1 µLdNTPs (SinaClon, Cat No: MM2082)- Taq DNA Polymerase (SinaClon, Cat No: DP1601)

Statistical Analysis: The frequency distribution of qualitative data in the study group was performed using the Chi-square test (χ^2). The normal distribution of quantitative variables was investigated using the One-Sample Kolmogorov-Smirnov test. Mean serum levels of CTRP3, hsCRP, and anti-CCP were compared before and after receiving livergol in patients with RA using a Paired Sample T-Test. SPSS16 (Ver 16, SPSS Inc., Chicago, USA)) was used for data analysis, and P<0.05 was considered statistically significant.

RESULTS

In this study, according to the intervention and the effectiveness of silymarin on a specific subgroup of patients, we divided the individuals into two responding and non-responding groups. In the responding group, CTRP3 levels were increased, but anti-CCP and hs-CRP levels were decreased. Patients in the non-responding group were found to have decreased CTRP3 levels, but increased levels of anti-CCP and hs-CRP levels. The mean serum level of anti-CCP Abs in the postintervention responding group decreased significantly compared to preintervention (96.70±90.16 vs 134.40±118.06 respectively; $p<0.001$) while in the non-responding group, the levels increased after the intervention compared to the levels before the intervention (129.83±55.02 vs 116.65±51.22 respectively; $p=0.019$).

The mean serum CTRP3 level in the response group increased after treatment compared to levels measured before treatment (1062.7±248.60 vs 885.15±227.6; $p=0.003$), however, in the non-responding group the mean serum level of CTRP3 decreased after intervention in comparison to the levels reported before intervention (840.79±282.70 vs 1222±669.38; $p=0.02$). Assessment of hs-CRP revealed that the responder group had significantly lower levels of hs-CRP when compared to the levels measured before livergol treatment (3.7±3.61 vs 5.40±5.35; $p=0.005$) whereas the non-responding group was found with significantly higher levels of hs-CRP after treatment 5.45±5.39 vs 3.71±2.61; $p<0.001$). (Fig. 1, Table 2).

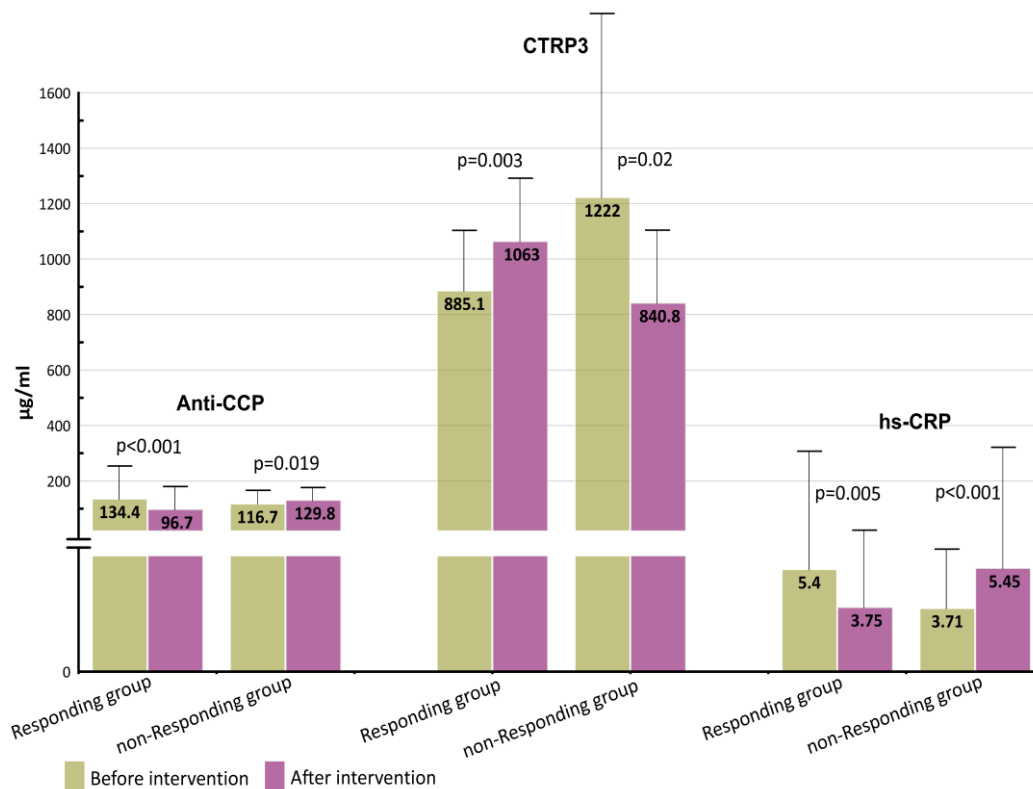


Figure 1: Comparison of mean serum levels of anti-CCP Abs, CTRP3, and hs-CRP levels in responding and non-responding subgroups.

The electrophoresis pattern of exon 6 on *CTRP3* is represented in Figure 2. According to the figure, two bands are formed, 715 bp and 855 bp. Figure 3 represents the data obtained from sequencing of exon 6 on *CTRP3* to determine mutations. According to Figure 3a, in the presented section, the nucleotide on the reverse strand in position 215 (green peak) is A therefore, the complementary nucleotide on the forward strand would be T. Since the wild type of nucleotide in this point is C, therefore, the mutation is C to T (C>T). In Figure 3b the nucleotide in position 338 on the forward strand (green peak) of the patient is A, therefore, the

wild-type allele is G and the mutation is G>A. Similarly, Figure 3c is a section of the reverse strand, the nucleotide on the reverse strand in position 153 (gray peak) is G therefore, the complementary nucleotide on the forward strand is C and the wild-type allele is T, therefore the mutation is T>C. Figure 3d is a section of the reverse strand, the nucleotide on the reverse strand in position 359 is G therefore, the complementary nucleotide on the forward strand is C and the wild-type allele is A, therefore the mutation is A>C. Table 3, represents the position of newly identified mutations.

Table 2: Comparison of mean \pm SD serum levels of anti-CCP ab, CTRP3, and hs-CRP levels in the patient group before and after treatment (response and no response to treatment).

	Before intervention	After intervention	P-value
Anti-CCP			
Responding group (n=29) \pm SD	134.40 \pm 118.06	96.70 \pm 90.16	<0.001
Non-responding group (n=8)	116.65 \pm 51.22	129.83 \pm 55.02	0.019
CTRP3			
Responding group (n=14)	885.15 \pm 227.6	1062.7 \pm 248.60	0.003
Non-responding group (n=24)	1222 \pm 669.38	840.79 \pm 282.70	0.02
hs-CRP			
Responding group (n=15)	5.40 \pm 5.35	3.75 \pm 3.61	0.005
Non-responding group (n=22)	3.71 \pm 2.61	5.45 \pm 5.39	<0.001

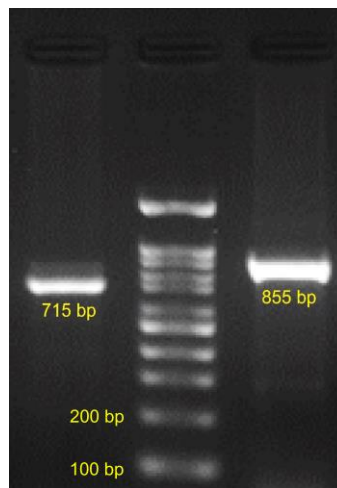


Figure 2: The electrophoresis pattern of PCR product resulting from exon 6 amplification of *CTRP3* gene.

Table 3: Mutations detected in *CTRP3* coding gene (exon 6)

Position	Type of mutation	Exon
Codon 215	C>T	Exon 6
Codon 338	T>C	Exon 6
Codon 259	G>C	Exon 6
Codon 153	A>C	Exon 6

DISCUSSION

Rheumatoid arthritis is a chronic systemic autoimmune disease that first affects the joints and may have devastating effects on the joints and other organs [26, 27]. Genetic and environmental factors can cause disease progression [28].

CRP is a 23 kD pentamer protein that is secreted by liver cells in response to a variety of inflammatory cytokines such as IL-1, IL-6, and TNF [29, 30]. Serum CRP levels are commonly used in rheumatoid arthritis (RA) as an alternative marker of systemic inflammation [5]. The high-sensitivity assays for CRP enable the detection of extremely low concentrations of the

biomarker [31]. CTRP3 in adult mice is known as adiponectin produced by adipose tissue and is involved in energy storage and metabolism. It is also produced in other tissues of organs such as the liver, lung, testicle, heart, etc., which indicates a wide range of producing sources and its possible roles in these sites. Its roles include maintaining the function of the cardiovascular system, regulation of inflammation, glucose/lipid metabolism, etc [32]. In this study, we investigated its role in inflammation. CTRP3 is an anti-inflammatory agent that is inversely related to inflammatory cytokines such as IL-1, IL-6, etc. It has also been observed to have great potential for treating some inflammatory diseases such as IgA nephropathy (IgAN) [13, 33]. Based on these data, we expect CTRP3 to be effective in the treatment of rheumatoid arthritis.

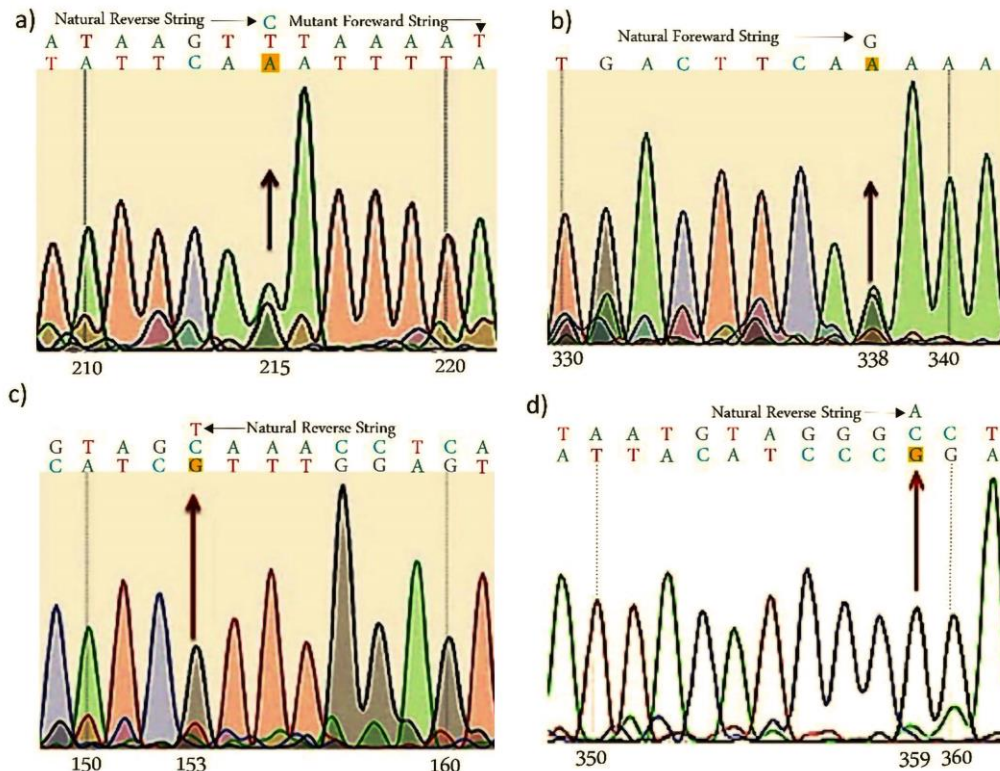


Figure 3: Exon 6 sequencing results of genes encoding CTRP3) a) position 215:C>T, b) 338:G>A, c) 153:T>C, and d) 359:A>C.

This study aimed to use the anti-inflammatory properties of silymarin to reduce inflammation caused by rheumatoid arthritis determined by reducing anti-CCP and hs-CRP inflammatory factors and possibly increase the anti-inflammatory factor CTRP3, which is thought to have a protective role in rheumatoid arthritis. Weight et al. 2005 and Kopp et al. 2010 showed that CTRP3 has anti-inflammatory properties by inhibiting cytokines produced by human monocytes [14, 34]. When CTRP3 levels were increased, the incidence of disease in these individuals decreased significantly [19, 32]. The results of this study are consistent with the present study.

Anti-CCP antibodies are autoimmune antibodies directed against peptides and citrulline proteins. They are the second serological markers in the ACR / EULAR criteria for early diagnosis and treatment of rheumatoid arthritis[9, 35]. Citrullinated anti-protein antibodies are antibodies that are made against the individual's citrullinated peptides and proteins. These antibodies are found in most people with rheumatoid arthritis. Clinically, CCPs are used to detect these antibodies in the blood or serum [9]. Since anti-CCP is one of the specific factors in rheumatoid arthritis, it is used to diagnose the causes of the disease [34]. The results of Papadopoulos et al showed that the presence of aCCP auto-Abs is linked to more active and

severe manifestation in terms of the time of diagnosis and during the disease course, however, serum levels of anti-CCP do not necessarily correlate with disease manifestation and activity [33]. In a 2015 study by Ebrahimipour Kojan et al., on 40 patients with type 2 diabetes mellitus, it was reported that silymarin can reduce hs-CRP levels by 26.83% compared with the placebo group. The result of the present study is consistent with the above study [36]. In another study performed by Abdul Rahman Hussein et al., on 60 patients (30 men and 30 women) with rheumatoid arthritis in Iraq, it was shown that Silybinin could lower anti-CCP and hs-CRP levels in patients with rheumatoid arthritis [37]. The results of our study are consistent with this study. Additionally, in a study by Elgarf et al., on 40 patients with type 2 diabetes mellitus in Egypt, the results of the study indicated a significant decrease in hs-CRP levels [38]. The results of our study are consistent with this study. In another research by Derosa et al., on 143 patients with dyslipidemia, silymarin was shown to be effective in reducing the inflammatory factor hs-CRP[39]. According to the results presented in Table 2, the levels of inflammatory factors hs-CRP and anti-CCP, which had increased in the patient group before the intervention, decreased after the intervention with the anti-inflammatory effect of silymarin; Also, the level of anti-inflammatory factor CTRP3 increased after the intervention.

The main limitation of the present study is the low number of the recruited individuals. We recommend including more individuals to have a better statistical analysis. Moreover, we also recommend adding RF and antinuclear antibody (ANA) tests to the testing parameters. Another limitation of this study was the lack of data on a correlation between each allele (protective and risk) for each described mutation with the serum levels of hs-CRP, anti-CCP antibodies, and CTRP3.

Acknowledgment: This work was performed in partial fulfillment of the requirements for the Pharm-D thesis of Mohammad Ehsan Elahi, in the School of Pharmacy, Kermanshah University of Medical Sciences Kermanshah, Iran. The authors gratefully acknowledge the Research Council of Kermanshah University of Medical Sciences (Grant Number 990743) for financial support.

Conflict of Interest: The authors declare that they have no conflict of interest.

Authors' Contribution: Conceptualization: AK, DEAK; Methodology: MEE, DEAK, FG, EMN, SA, MSH; Formal analysis and investigation: AK, HE; Writing - original draft preparation; Writing - review and editing: DEAK, AK; Supervision: AK; Graphic work: DEAK.

REFERENCES

1. Mueller AL, Payandeh Z, Mohammadkhani N, Mubarak SMH, Zakeri A, Alagheband Bahrami A, Brockmueller A, Shakibaei M. Recent advances in understanding the pathogenesis of rheumatoid arthritis: New treatment strategies. *Cells* 2021;10:3017.
2. Venetsanopoulou AI, Alamanos Y, Voulgari PV, Drosos AA. Epidemiology of rheumatoid arthritis: genetic and environmental influences. *Expert Rev Clin Immunol* 2022;18:923-931.
3. Elieh Ali Komi D, Grauwet K. Role of mast cells in regulation of T cell responses in experimental and clinical settings. *Clin Rev Allergy Immunol* 2018;54:432-445.
4. Sparks JA. Rheumatoid Arthritis. *Ann Intern Med* 2019;170:ITC1-ITC16
5. Pope JE, Choy EH. C-reactive protein and implications in rheumatoid arthritis and associated comorbidities. *Semin Arthritis Rheum* 2021;51:219-229.
6. Kim KW, Kim BM, Moon HW, Lee SH, Kim HR. Role of C-reactive protein in osteoclastogenesis in rheumatoid arthritis. *Arthritis Res Ther* 2015;17:41.
7. Ali AM, Rostam HM, Fatah MH, Noori CM, Ali KM, Tawfeeq HM. Serum troponin, D-dimer, and CRP level in severe coronavirus (COVID-19) patients. *Immun Inflamm Dis* 2022;10:e582.

8. Elieh Ali Komi D, Rahimi Y, Asghari R, Jafari R, Rasouli J, Mohebalizadeh M, Abbasi A, Nejadrahim R, Rezazadeh F, Shafiei-Irannejad V. Investigation of the molecular mechanism of coagulopathy in severe and critical patients with COVID-19. *Front Immunol* 2021;12:762782.
9. Puszczewicz M, Iwaszkiewicz C. Role of anti-citrullinated protein antibodies in diagnosis and prognosis of rheumatoid arthritis. *Arch Med Sci* 2011;7:189-194.
10. Hasegawa N, Fujie S, Horii N, Uchida M, Kurihara T, Sanada K, Hamaoka T, Iemitsu M. Aerobic exercise training-induced changes in serum C1q/TNF-related protein levels are associated with reduced arterial stiffness in middle-aged and older adults. *Am J Physiol Regul Integr Comp Physiol* 2018;314:R94-R101.
11. Trier NH, Houen G. Epitope specificity of anti-citrullinated protein antibodies. *Antibodies (Basel)* 2017;6:5.
12. Elieh Ali Komi D, Shafaghat F, Christian M. Crosstalk between mast cells and adipocytes in physiologic and pathologic conditions. *Clin Rev Allergy Immunol* 2020;58:388-400
13. Schäffler A, Buechler C. CTRP family: linking immunity to metabolism. *Trends Endocrinol Metab* 2012;23:194-204
14. Kopp A, Bala M, Buechler C, Falk W, Gross P, Neumeier M, Schölmerich J, Schäffler A. C1q/TNF-related protein-3 represents a novel and endogenous lipopolysaccharide antagonist of the adipose tissue. *Endocrinology* 2010;151:5267-5278.
15. Masoodian SM, Toolabi K, Omidifar A, Zabihi H, Rahimipour A, Shanaki M. Increased mRNA expression of CTRP3 and CTRP9 in adipose tissue from obese women: is it linked to obesity-related parameters and mRNA expression of inflammatory cytokines? *Rep Biochem Mol Biol* 2020;9:71-81
16. Fadaei R, Moradi N, Baratchian M, Aghajani H, Malek M, Fazaeli AA, Fallah S. Association of C1q/TNF-related protein-3 (CTRP3) and CTRP13 serum levels with coronary artery disease in subjects with and without type 2 diabetes mellitus. *PLoS One* 2016;11:e0168773.
17. Zhang J, Zhang B, Cheng Y, Xu J. Low serum CTRP3 levels are associated with nonalcoholic fatty liver disease in patients with type 2 diabetes mellitus. *Cytokine* 2018;106:131-135.
18. Wagner RM, Sivagnanam K, Clark WA, Peterson JM. Divergent relationship of circulating CTRP3 levels between obesity and gender: a cross-sectional study. *PeerJ* 2016;4:e2573.
19. Peterson JM, Wei Z, Wong GW. C1q/TNF-related protein-3 (CTRP3), a novel adipokine that regulates hepatic glucose output. *J Biol Chem* 2010;285:39691-39701.
20. Navabi SM, Elieh-Ali-Komi D, Afshari D, Goudarzi F, Mohammadi-Noori E, Heydari K, Heydarpour F, Kiani A. Adjunctive silymarin supplementation and its effects on disease severity, oxidative stress, and inflammation in patients with Alzheimer's disease. *Nutr Neurosci* 2024;14:1-11
21. El-Lakkany NM, Hammam OA, El-Maadawy WH, Badawy AA, Ain-Shoka AA, Ebeid FA. Anti-inflammatory/anti-fibrotic effects of the hepatoprotective silymarin and the schistosomicide praziquantel against *Schistosoma mansoni*-induced liver fibrosis. *Parasit Vectors* 2012;5:9.
22. Ferraz AC, Almeida LT, da Silva Caetano CC, da Silva Menegatto MB, Souza Lima RL, de Senna JPN, de Oliveira Cardoso JM, Perucci LO, Talvani A, Geraldo de Lima W, de Mello Silva B, Barbosa Reis A, de Magalhães JC, Lopes de Brito Magalhães C. Hepatoprotective, antioxidant, anti-inflammatory and antiviral activities of silymarin against mayaro virus infection. *Antiviral Res* 2021;194:105168.
23. Aliyari M, Elieh Ali Komi D, Kiani A, Moradi M, Tanhapour M, Rahimi Z, Mozafari H, Mohammadi-Noori E, Pourmotabbed T, Vaisi-Raygani A, Bahrehmand F. The role of caveolin-1 and endothelial nitric oxide synthase polymorphisms in susceptibility to prostate cancer. *Int J Exp Pathol* 2021;102:260-267
24. Amiri M, Elieh Ali Komi D, Vaisi-Raygani A, Kiani A, Moradi M, Aliyari M, Rahimi Z, Mohammadi-Noori E, Bashiri H. Association between vitamin D binding protein gene

- polymorphism (rs7041), vitamin D receptor, and 25-hydroxyvitamin D serum levels with prostate cancer in Kurdish population in west of Iran. *Pathol Oncol Res* 2022;28:1610246.
25. Mohammadi-Noori E, Salehi N, Mozafari H, Elieh Ali Komi D, Saidi M, Bahrehmand F, Vaisi-Raygani A, Elahirad S, Moini A, Kiani A. Association of *AHSG* gene polymorphisms with serum Fetuin-A levels in individuals with cardiovascular calcification in west of Iran. *Mol Biol Rep* 2020;47:1809-1820
 26. Vanni A, Mazzoni A, Semeraro R, Capone M, Maschmeyer P, Lamacchia G, Salvati L, Carnasciali A, Farahvachi P, Giani T, Simonini G, Filocamo G, Romano M, Liotta F, Mashreghi MF, Cosmi L, Cimaz R, Magi A, Maggi L, Annunziato F. Clonally expanded PD-1-expressing T cells are enriched in synovial fluid of juvenile idiopathic arthritis patients. *Eur J Immunol* 2023;53:e2250162
 27. Brown P, Pratt AG, Hyrich KL. Therapeutic advances in rheumatoid arthritis. *BMJ* 2024; 384:e070856.
 28. Finckh A, Gilbert B, Hodkinson B, Bae SC, Thomas R, Deane KD, Alpizar-Rodriguez D, Lauper K. Global epidemiology of rheumatoid arthritis. *Nat Rev Rheumatol* 2022;18:591-602.
 29. Mostmans Y, De Smedt K, Richert B, Elieh Ali Komi D, Maurer M, Michel O. Markers for the involvement of endothelial cells and the coagulation system in chronic urticaria: A systematic review. *Allergy* 2021;76:2998-3016.
 30. Ullah I, Awan HA., Aamir A, Diwan MN, de Filippis R, Awan S, Irfan M, Fornaro M, Ventriglio A, Vellante F, Pettoruso M, Martinotti G, Di Giannantonio M, De Berardis D. Role and perspectives of inflammation and C-reactive protein (CRP) in psychosis: An economic and widespread tool for assessing the disease. *Int J Mol Sci* 2021;22:13032.
 31. Shokri-Mashhadi N, Moradi S, Heidari Z, Saadat S. Association of circulating C-reactive protein and high-sensitivity C-reactive protein with components of sarcopenia: A systematic review and meta-analysis of observational studies. *Exp Gerontol* 2021;150:111330.
 32. Guo B, Zhuang T, Xu F, Lin X, Li F, Shan SK, Wu F, Zhong JY, Wang Y, Zheng MH, Xu QS, Ehsan UMH, Yuan LQ. New insights into implications of CTRP3 in obesity, metabolic dysfunction, and cardiovascular diseases: Potential of therapeutic interventions. *Front Physiol* 2020;11:570270.
 33. Papadopoulos NG, Tsiaousis GZ, Pavlitou-Tsiontsi A, Giannakou A, Galanopoulou VK. Does the presence of anti-CCP autoantibodies and their serum levels influence the severity and activity in rheumatoid arthritis patients?. *Clin Rev Allergy Immunol* 2008;34:11-15.
 34. Weigert J, Neumeier M, Schäffler A, Fleck M, Schölmerich J, Schütz C, Buechler C. The adiponectin paralog CORS-26 has anti-inflammatory properties and is produced by human monocytic cells. *FEBS Lett* 2005;579:5565-5570.
 35. Kay J, Upchurch KS. ACR/EULAR 2010 rheumatoid arthritis classification criteria. *Rheumatology (Oxford)* 2012;51:vi5-vi9.
 36. Ebrahimpour Koujan S, Gargari BP, Mobasseri M, Valizadeh H, Asghari-Jafarabadi M. Effects of *Silybum marianum* (L.) Gaertn. (silymarin) extract supplementation on antioxidant status and hs-CRP in patients with type 2 diabetes mellitus: a randomized, triple-blind, placebo-controlled clinical trial. *Phytomedicine* 2015;22:290-296.
 37. Hussain SA, Mortada AH, Jasim NA, Gorial FI. Silibinin improves the effects of methotrexate in patients with active rheumatoid arthritis: Pilot clinical study. *Oman Med J* 2016;31:263-269
 38. Elgarf AT, Mahdy MM, Sabri NA. Effect of silymarin supplementation on glycemic control, lipid profile and insulin resistance in patients with type 2 diabetes mellitus. *Int J Adv Res* 2015;3:812-821.
 39. Giuseppe D, Angelaq D'A, Davide R, Pamela M. Effects of a combination of berberis aristata, silybum marianum and monacolin on lipid profile in subjects at low cardiovascular risk; A double-blind, randomized, placebo-controlled trial. *Int J Mol Sci* 2017;18:343.