

Figure S1: Schematic figure represents *LEP* gene regions, promoter represented by double line followed by untranslated exon 1. Exons 2 and 3 are the coding regions (black boxes) [23].

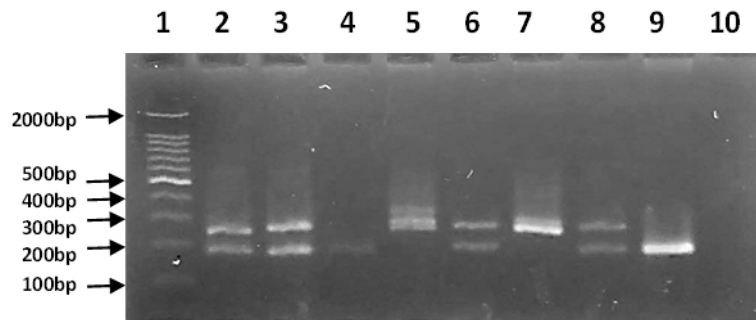


Figure S2: Agarose gel electrophoresis of *LEP* gene microsatellite alleles, lane 1: 100bp marker. Lanes 5 and 7 are class 2. Lanes 2, 3, 6 and 8 are class 1/class 2. Lane 10 is negative control.

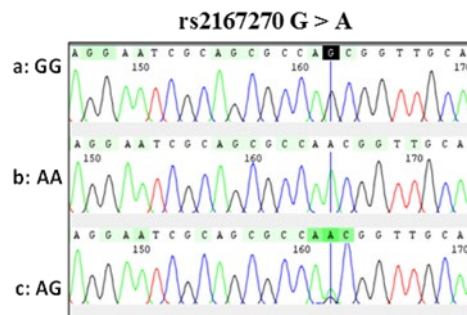


Figure S3: *LEP* 5'UTR genotypes, a: homo for G allele; b: homo for A allele and c: heterozygous (GA).

Table S1: Primers used in screening of *LEP* gene.

<i>LEP</i> Primers	Target	Amplicon size bp	Reference
forward 5'-GCCCCGCGAGGTGCACACTG-3' Reverse 5'-GAGCGCGCCGGGCCTTAC-3'	5'UTR	213	[23]
forward 5'-TCTGTTTTTCAGGCCCAAGAA-3' Reverse 5'-TCCCCGGATACTCTCCTTA-3'	Exon 2	203	[17]
forward 5'-TCCCTCTTCCTCCTGCATA-3' Reverse 5'-GCAGGAAGAGTGACCTTCAA-3'	Exon 3	404	[17]
forward 5'-CCATTCTGAGTTCAAATAGAGGTCC-3' Reverse 5'-TGGAATTGGGACACATGTTCTCA-3'	Microsatellite	185-250	This study